

POLYTRON® PT 6100 D



Stand-disperser (High-End Line)

POWERFUL, FLEXIBLE-USE DISPERSER

With digital controller, numerous applications

« Working volume 0.1 bis 30,000 ml »



KINEMATICA

DISPERSING AND MIXING TECHNOLOGY

POLYTRON® - Efficient and Powerful Disperser

This instrument meets the highest standards of reproducibility and scaling up and the reserve capacities of this motor enable the handling of larger quantities without any decline in quality. The fully digitized control and regulation system is very easy to operate. The illuminated LCD displays all required parameters which can be adjusted if necessary, with the membrane keypad.

TECHNICAL INFORMATION

Processing volume (water)
0.1 to 30,000 ml

Tip speed
Up to max. 32 m/s

Applicable aggregates
ø 5 to 65 mm

Speed range
500 to 26,500 rpm

Drive coupling
Aggregates with F coupling

Noise level (drive without aggregate)
82 dB(A) at 26,500 rpm

Motor
Universal with carbon brushes

Drive power
1700W

Connection voltage
110 - 230 V ± 10%, 50Hz / 60Hz

Relative humidity (max.)
80% during storage
80% during operation

Operating temperature
0 - 40 °C

PC interfaces
RS-232 (D SUB 9)
USB socket B

Protection class acc. to DIN
IP 20

Dimensions (L x B x H)
Drive: 235 x 164 x 313 mm

Weight
Drive: 7.4 kg

EMC standards
IEC/EN 61000-6-2 / EN 61000-6-3

Safety standard
IEC/EN 61010-2-51

THE EXPERT FOR YOUR LABORATORY

For more than 60 years, we have been perfecting the rotor/stator technology, working in close cooperation with users and universities. When using our technology, your test samples will be dispersed into homogeneous, chemical systems. Depending on the type of samples you will get homogeneous emulsions, dispersions or suspensions. This is the best foundation for all subsequent analyses or formulations.

ERGONOMICS

- Easy operation with an on-off switch and membrane keypad
- Digital speed control for long equipment life
- Protection against overheating, overload and blocking
- Speed stability even with changes in viscosity
- Easy to adjusted motor height (depending on the stand)
- Aggregates quickly switched with Click & Go coupling
- Easy aggregate clean-up with EasyClean Design

SCALE-UP



LABORATORY

PILOT PLANT

PRODUCTION

You can use test results to scale-up to our pilot plant and industrial POLYTRON® machines. The volume range for on batch units is seamlessly available up to 10,000 liters.

RESULTS ARE CONVINCING

SMALLEST SIZES OF PARTICLES/DROPLETS
because precise analysis require homogeneous samples

EFFICIENT SAMPLE PREPARATION
because fast dispersion saves time

STANDARD OR CUSTOM-MADE AGGREGATES
perfected for and in cooperation with the users

CLEANING AND DISASSEMBLY
EasyClean Design makes it very simple

QUICK ENGAGEMENT OF THE AGGREGATES by using Click & Go

BEST MATERIALS AVAILABLE
because without them, we could not call it Swiss Made

DURABILITY is a Swiss virtue



Kinematic dispersion using the rotor/stator system

Who is the founder of it?

The roots of today's KINEMATICA began in the former chemical/physical research institute of Prof. P. Willems in Lucerne Switzerland, the inventor of the modern rotor/stator dispersion technology.

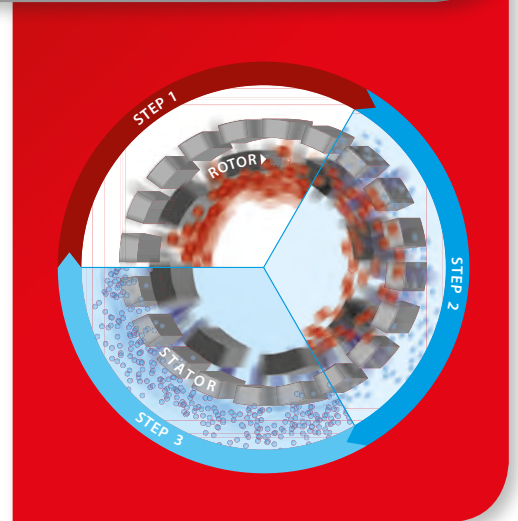
THE PRINCIPLE:

The spinning rotor generates a vacuum. The sample is drawn in and discharged to the outside through the stator's slots. Between the rotor/stator (shear gap), the product is subject to high deceleration-tangential and radial acceleration forces. The individual particles/droplets are torn apart and thus reduced in size; they are reduced several micrometers in size through additional cutting and crashing effects.

THE RESULT:

Microscopic dispersions, emulsions, suspensions, and foams are generated. Droplets, particles, and gas bubbles are reduced to several micrometers or smaller. Small and large substances are dispersed more economically, faster, and better than with any other system.

Your samples are efficiently «**POLYTRONIZED**».



Aggregate Technology

Unrivaled!

The high efficiency and the uniqueness of our POLYTRON® dispersing aggregate can only be achieved through superior manufacturing precision and the sophisticated KINEMATICA design method. This is 100% Swiss Made.

STANDARD AGGREGATES (EC DESIGN, WITH TWO OR MORE SPROCKETS)

This is all you need for popular applications in the preparation of samples and formulation development. The cutting teeth embedded in the head of the tool optimize the pre-crushing of the sample. An enclosed ring design provides optimum protection for those teeth and prevents them from bending.

SPECIAL AGGREGATES (W, M, B, DS, Z DESIGN)

Specializations in the chemical, pharmaceutical, cosmetic, and food industry, as well as the life sciences, makes new designs inevitable. These aggregates are based on state-of-the-art technology and only available from KINEMATICA.

The highly specialized tool is subject to further development that involves close cooperation with our customers and universities. Thus, it is continuously perfected for specific applications.

MATERIALS

Whether you need a tool with standard or special geometry, all aggregates are manufactured from high-alloy stainless steel 316L, electrolytically polished and made in Switzerland.

BEARINGS

Depending on the diameter, our aggregates are made with high-quality plastic, special carbide or bronze/carbide bearings. They have excellent mechanical properties and chemical resistance and have FDA approvals. Super high-speed ball bearings are used in the couplings to provide stability at speeds of up to 30,000 rpm.

CLEANING AND DISASSEMBLY

EasyClean: Our technology ensures the simplest removal and fast cleaning, either by hand, dishwasher, or autoclave. Disassembling the precisely fitting components is simple and fast.

LOCKING SYSTEM

All our POLYTRON® aggregates are fitted with a high-precision quick-release system: The Click & Go

Dispersing aggregates for PT 6100 D

EC «STANDARD DISPERSING AGGREGATE»



Design

The universal geometry uses two rows of teeth, is suitable for a large spectrum of laboratory applications, and it is reliable and efficient

Selection and applications

- All standard dispersing tasks
- Grinding of animal and human tissue samples in a variety of fluids and volumes
- Sample preparation for the extraction and dissolution of organic materials

- Sample preparation for medical diagnostic procedures as well as DNA analysis
- Extractions of systems/substances from vegetable-derived samples
- Disruption of animal and human cells
- Deagglomeration of united cell structures
- Intensive mixing

Sales No.:	Description	ø/length mm	Volume ml	max. Tip speed
11030297	PT-DA 05/2EC-F078	5 / 78	0.1 - 5	5
11030298	PT-DA 07/2EC-F101	7 / 101	0.3 - 10	8
11030299	PT-DA 12/2EC-F154	12 / 154	3 - 250	14
11030302	PT-DA 20/2EC-F193	20 / 193	20 - 2'000	22
11030305	PT-DA 30/2EC-F250	30 / 250	100 - 4'000	30
11030311	PT-DA 30/4EC-F250	30 / 250	100 - 4'000	30
11030313	PT-DA 36/2EC-F250	36 / 250	200 - 4'500	34
11030317	PT-DA 36/4EC-F250	36 / 250	200 - 4'500	34
11030320	PT-DA 40/2EC-F250	40 / 250	200 - 5'000	36
11030325	PT-DA 45/2EC-F250	45 / 250	200 - 6'000	40
11030329	PT-DA 45/6EC-F250	45 / 250	200 - 6'000	40
11030330	PT-DA 50/2EC-F250	50 / 250	300 - 10'000	44
11030335	PT-DA 50/4EC-F250	50 / 250	300 - 10'000	44
11030338	PT-DA 60/2EC-F250	60 / 250	300 - 30'000	50

M «OUTSIDE CUTTING BLADES»



Design

Outside blades pre-crush samples that are larger than the rotors diameter. Subsequently, they can be dispersed inside the generator

Selection and applications

- Dispersing of large samples made simple
- All standard dispersing applications similar to EC aggregate

Sales No.:	Description	ø/length mm	Volume ml	max. Tip speed
11030300	PT-DA 12/2MEC-F154	12 / 154	3 - 250	14
11030303	PT-DA 20/2MEC-F193	20 / 193	20 - 2'000	22
11030307	PT-DA 30/2MEC-F250	30 / 250	100 - 4'000	30
11030308	PT-DA 30/2MG-F273*	30 / 273	100 - 4'000	30
11030315	PT-DA 36/2MEC-F250	36 / 250	200 - 4'500	34
11030322	PT-DA 40/2MEC-F250	40 / 250	200 - 5'000	36
11030323	PT-DA 40/2MG-F250*	40 / 250	200 - 5'000	36
11030332	PT-DA 50/2MEC-F250	50 / 250	300 - 10'000	44
11030333	PT-DA 50/2MG-F250*	50 / 250	300 - 10'000	44
11030340	PT-DA 60/2MEC-F250	60 / 250	300 - 30'000	50
11030341	PT-DA 60/2MG-F250*	60 / 250	300 - 30'000	50

* M-design aggregate in gas-tight model

W «W-DESIGN»



Design

The W design prevents fibrous, stringy or solid samples from clogging the aggregate

Selection and applications

- Dispersing fibrous, stringy or solid samples (e.g., pieces of meat)
- All standard dispersing applications similar to EC aggregate

Sales No.:	Description	ø/length mm	Volume ml	max. Tip speed
11030301	PT-DA 12/2WEC-F154	12 / 154	3 - 250	14
11030304	PT-DA 20/2WEC-F193	20 / 193	20 - 2'000	22
11030294	PT-DA 20/2G-F210*	20 / 210	20 - 2'000	30
11030309	PT-DA 30/2WEC-F250	30 / 250	100 - 4'000	30
11030345	PT-DA 30/2WMEC-F250**	30 / 250	100 - 4'000	30
11030319	PT-DA 36/2WEC-F250	36 / 250	200 - 4'500	34
11030346	PT-DA 36/2WMEC-F250**	36 / 250	100 - 4'500	34
11030324	PT-DA 40/2WEC-F250	40 / 250	200 - 5'000	36
11030328	PT-DA 45/2WEC-F250	45 / 250	200 - 6'000	40
11030334	PT-DA 50/2WEC-F250	50 / 250	300 - 10'000	44
11030342	PT-DA 60/2WEC-F250	60 / 250	300 - 30'000	50

* W-design aggregate in gas-tight model

** W-Design aggregate with knives

KINEMATICA aggregates solve all problems you are faced with every day in the laboratory. Using our Click & Go quick release makes the changing of aggregates very easy.

G «GASTIGHT»

Design

Integrated mechanical seals

Selection and applications

- Under pressure or vacuum
- Preventing air from being added to emulsions
- Corrosive acid mixtures



Sales No.:	Description	ø/length mm	Volume ml	max. Tip speed
11030295	PT-DA 20/2G-F210	20 / 210	20 - 2'000	22
11030306	PT-DA 30/2G-F273	30 / 273	100 - 4'000	30
11030312	PT-DA 30/4G-F273	30 / 273	100 - 4'000	30
11030316	PT-DA 36/2G-F273	36 / 273	200 - 4'500	34
11030318	PT-DA 36/4G-F273	36 / 273	200 - 4'500	34
11030321	PT-DA 40/2G-F273	40 / 273	200 - 5'000	36
11030327	PT-DA 45/2G-F273	45 / 273	200 - 6'000	40
11030331	PT-DA 50/2G-F273	50 / 273	300 - 10'000	44
11030336	PT-DA 50/6G-F273	50 / 273	300 - 10'000	44
11030339	PT-DA 60/2G-F273	60 / 273	300 - 30'000	50

Z «Z-DESIGN»

Design

Breaking up of hard samples, with integrated V-notch technology. Additional, integrated holes for cleaning

Selection and applications

- Hard and brittle material
- Sweet corn and grain
- Breaking, open and dispersing of pills
- Breaking, hard grains



Sales No.:	Description	ø/length mm	Volume ml	max. Tip speed
11030310	PT-DA 30/2ZEC-F250	30 / 250	100 - 4'000	29

B «BIOTRONA® HIGH-TURBULENCE MIXER»

Design

High-turbulence mixing head with the least possible shear forces and energy inputs

Selection and applications

- Quick removal and suspension of solid particles; also suitable for high viscosity applications



Sales No.:	Description	ø/length mm	Volume ml	max. Tip speed
11030296	PT-DA 20/BEC-F193	20 / 193	100 - 2'000	21
11030314	PT-DA 36/BEC-F250	36 / 250	300 - 10'000	34
11030326	PT-DA 45/BEC-F250	45 / 250	500 - 30'000	40

DS «DISSOLVER»

Design

A processing head with teeth. The product is radially accelerated

Selection and applications

- Fast mixing and homogenizing of solids in liquid
- Processing of highly viscous products



Sales No.:	Description	ø/length mm	Volume ml	max. Tip speed
11030344	PT-DA 30/DS-F250	30 / 250	500 - 10'000	30
11030337	PT-DA 53/DS-F250	53 / 250	800 - 30'000	47
11030343	PT-DA 65/DS-F250	65 / 250	1'000 - 40'000	50

TIN «TITANIUM NITRATED» - UPGRADE

Design

Rotor and/or stator with up to three rows of teeth with a titanium nitrated (TiN) coating

Selection and applications

- All dispersing applications with abrasive samples



Sales No.:	Description
11035050	TiN rotor for the selected dispersing aggregate, ø 12-60 mm
11035150	TiN stator for the selected dispersing aggregate, ø 12-60 mm

Dispersing vessels

Choosing the right dispersing aggregate is crucial for good results. The right vessel also helps contribute to achieving the desired results.

THE PROBLEM

For normal cylindrical beakers, the flow creates a vortex. The mixing and dispersing efficiency decreases considerably since the product is no longer being optimally processed through the dispersing generator head. This lengthens processing times, requiring more energy input. Depending on the shape of the vortex, this may also lead to additional air being introduced.

THE SOLUTION

Our specially designed GS jars have a cloverleaf-like shape. This effectively interrupts the flow in the radial direction and generates additional counteracting forces. These high turbulences maximize the mixing and dispersion efficiency, thus minimizing processing time and requiring less energy.

THE SELECTION

Our GS-glasses are available in chemical- and temperature-resistant borosilicate glass or in stainless steel, with working volumes from a few milliliters to several liters, with or without lid and with or without sealed feedthrough.



GS vessel principle
(viewed from above)



THE RIGHT DISPERSING VESSEL

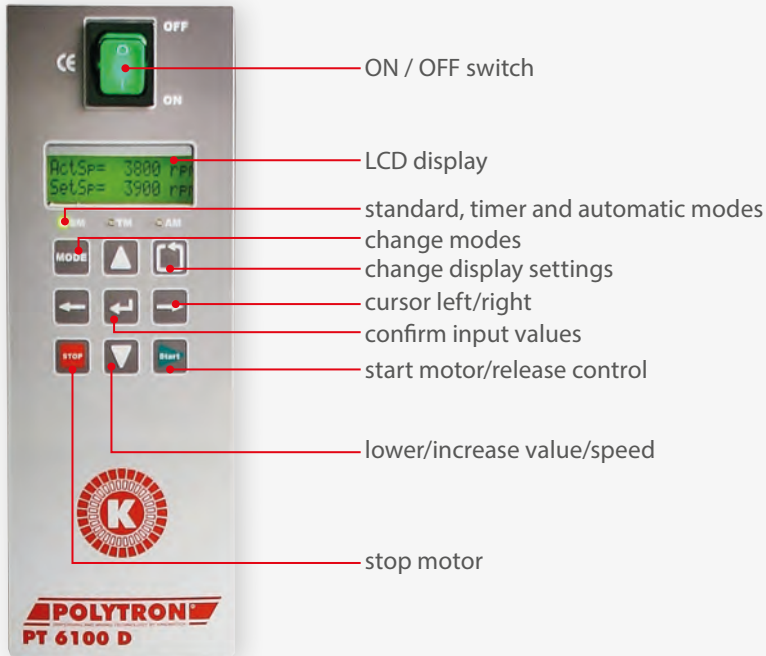


Designation	Sales no.:	Ø / H (mm)	Process volume	Model			
GS 15	11050010	30 / 150	35 ml	Cloverleaf shaped	Borosilicate glass	top open without cover	
GS 25	11050011	55 / 150	150 ml			with screw cover, glass inlet:	
GS 40	11050012	80 / 200	500 ml			GS 15K Ø 9 mm	
GS 50	11050013	90 / 250	1'000 ml			GS 25K Ø 25 mm	
GS 60	11050014	100 / 300	1'300 ml			GS 40/50/60K Ø 40 mm	
GS 15 K	11050020	30 / 150	35 ml			with screw cover and sealed feedthrough 7.5, 12, 20, 25 mm	
GS 25 KL 12	11050031	55 / 150	150 ml				
GS 40 K	11050022	80 / 200	500 ml				
GS 50 K	11050023	90 / 250	1'000 ml				
GS 60 K	11050024	100 / 300	1'300 ml				
GS 15 KL 7.5	11050030	30 / 150	35 ml	glass inlet (as above)			
GS 25 KL 20	11050032	55 / 150	150 ml	Cloverleaf. Stainless steel	open top with cover		
GS 40 KL 25	11050034	80 / 200	500 ml				
GS 50 KL 25	11050036	90 / 250	1'000 ml				
GS 60 KL 25	11050038	100 / 300	1'300 ml				
GS 100	11050050	155 / 200	3'000 ml			Cylindrical Stainless steel	open top without lid
GS 130	11050051	180 / 210	4'000 ml				
GS 150	11050052	180 / 320	6'000 ml				
GS 190	11050053	230 / 320	10'000 ml				
GS 100 Z	11050060	100 / 150	900 ml				
GS 130 Z	11050061	125 / 170	2'000 ml				
GS 155 Z	11050062	175 / 190	3'500 ml				
GS 175 Z	11050063	175 / 230	4'500 ml				
GS 200 Z	11050064	200 / 270	7'000 ml				
GS 230 Z	11050065	230 / 285	9'000 ml				

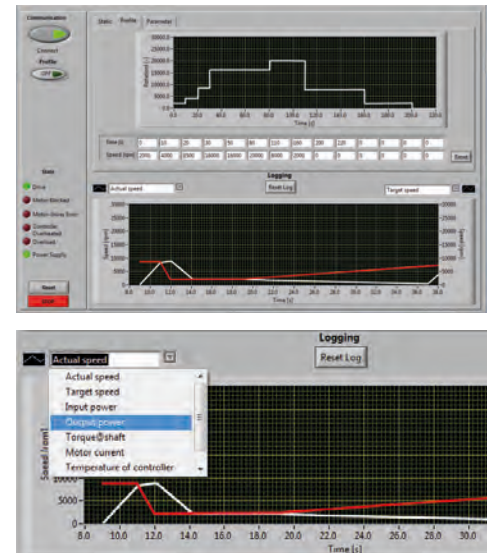
PC control software

CONTROL PANEL

The PT 6100 D is controlled digitally via a keypad. All important operating parameters can be read on the 2-line LCD display.



The free-of-charge software «User Interface PT 6100 D» was developed for the operation and control of the laboratory dispersing system POLYTRON® PT 6100 D. A USB or RS232 interface provides the communication to the computer. The data transmission protocol complies with the Modbus specifications.



OPERATING MODE

- STANDARD MODE: Operation by manual control
- TIMER MODE: Automatic shutdown by recording speed and time
- AUTO MODE: Complete control through the included KINEMATICA software

KINEMATICA SOFTWARE

- Set the speed via PC
- Store speed/time profile to reproduce formulas or processes
- Adjustable temperature limits as stop criterion, for example, to prevent product overheating (with Pt100 temperature probe)
- Graphical representation of parameters with time diagram
- Continuous recording of all parameters listed above in MS Excel format
- PC software and cable included

ADDITIONAL FEATURES

- Memory function: remembers the last speed setting and the time when the device shut off
- displays the product temperature by means of the optional Pt100 temperature probe

PARAMETERS RETRIEVABLE VIA LCD DISPLAY

- Actual speed [AS, rpm]
- Target speed [TS, rpm]
- Power in [Pin, W]
- Power out [Pout, W]
- Moment of force [M Ncm]
- Motor current [I, A]
- Supply voltage [U, V]
- Product temperature (with optional Pt100 temperature probe) [TP, °C]
- Internal temperature controller [Tc, °C]
- Operating hours meter [Oh, h]
- Firmware

SYSTEM REQUIREMENTS:

- Operating system: Windows® XP / 7 / 8
Required interfaces: 1 x USB or 1 x RS-232



Comfort at the highest level

Modern laboratories want equipment that is easy to handle. This rugged electric tripod offers a variety of benefits.

REQUIREMENTS

The processing of large sample volumes or viscous products requires larger, higher torque drive units and larger aggregates which are quite heavy. These factors were the reasons for making this stand available to our customers.

Now, what has long been a part of the standard equipment in the pilot plants, is now available for laboratory use.

PRINCIPLE

- Powerful motor mounted onto the telescopic lifting arm
- Durable, robust construction
- High stability due to the massive aluminum base plate

RESULT

- Easy height adjustment by means of two buttons
- Anti-slip mat included
- Available with optional vessel holder



OTHER STANDS AND ORDER NUMBERS

Figure	1	2	2	2	2
Sales no.:	11040032	11040033	11040036	11040037	11040034
Designation	ST-F 13/820	ST-P 14/590+500, 230 V (EU-plug)	ST-P 14/590+500, 230 V (CH-plug)	ST-P 14/590+500, 230 V (UK-plug)	ST-P 14/590+500, 100-120 V
Description	Single column, H-foot, „Economy“ stand with two cross joints, safety ring, vessel holder, bracket adapter 4. Weight: 10.5 kg	Electric plate stand with lifting telescopic bar for more ease of use. Incl. up/down button and mat to prevent slipping. The electronics are designed for ambient temperatures of +5°C to +40°C and were tested per EN 60335-1 and UL 962. Weight: 11 kg			



1



2

STAND ACCESSORIES

Sales no.:	Designation	Description
11036005	Vessel holder	Vessel holder with guide for ST-P 14/590+500

Order information and accessories

Depending on your specific requirements, it is possible to expand the PT 3100D drive with our functional accessories. Our expert personnel will be happy to assist you and answer all the questions you might have.

ADAPTER

Adapters for use with dispersing aggregate with A coupling

Sales No.:	Designation
11035001	Adapter PT-DA / PTA (F/A)

Description

This adapter connects older A-coupling dispersing aggregates such as PT-K / PT-G with this PT 6100 D motor (with F-coupling).



TEMPERATURE PROBE

For measuring the product temperature. The probe can be directly connected to the rear panel of the device.

Sales No.:	Designation
11020050	Pt100

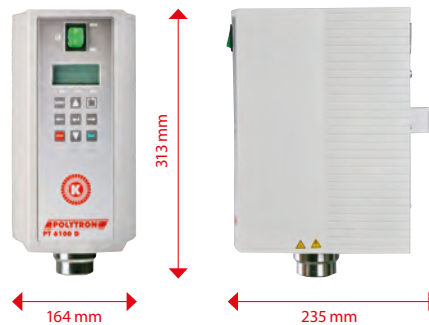
Description

- Temperature range 0 °C to 120 °C
- Temperature displayed on LCD display
- If the temperature probe is used with the PC software, the temperature is displayed and you can set temperature limits and have the software record the current temperatures



DRIVES / COMPLETE SYSTEMS

Sales No.:	Description
Motor	
11010110	POLYTRON® PT 6100 D, 230 V / EU -Power cord, PC software, RS-232/USB connection cable
11010111	POLYTRON® PT 6100 D, 230 V / CH -Power cord, PC software, RS-232/USB connection cable
11010112	POLYTRON® PT 6100 D, 230 V / UK -Power cord, PC software, RS-232/USB connection cable
11010113	POLYTRON® PT 6100 D, 100-120 V / Power cord, PC software, RS-232/USB connection cable
Motor is sold with stand and accessories	
11090121	PT 6100 D, 230 V , EU -Power cord, stand ST-P 14/590+500, PC software, RS-232/USB connection cable
11090122	PT 6100 D, 230 V , CH -Power cord, stand ST-P 14/590+500, PC software, RS-232/USB connection cable
11090124	PT 6100 D, 230 V , UK -Power cord, stand ST-P 14/590+500, PC software, RS-232/USB connection cable
11090123	PT 6100 D, 100-120 V / Power cord, stand ST-P 14/590+500, PC software, RS-232/USB connection cable



KINEMATICA solutions for your homogenizing, dispersing, emulsifying, suspending, crushing, wet milling tasks.

Our staff will be happy to advise you. We will be glad to you additional documentation or present the POLYTRON® systems to you in person.

YOUR APPLICATION IS OUR FOCUS!

KINEMATICA is a leading manufacturer of dispersing and mixing technology for standard and customized applications in the lab, pilot plant and production areas of pharmaceutical, chemical, food, cosmetic and biotech or life science companies worldwide.

Our POLYTRON® batch and MEGATRON® In-line Homogenizers are suitable for many applications:

- Dispersing of non soluble liquids or solids into liquids to finest emulsions/multiple emulsions or suspensions
- Induction and dispersion of powders into liquids
- Foaming by gas induction into liquids
- Disintegration of tissue samples for preparation in further analysis
- Dispersing of various samples for quality control

We also deliver POLYMIX® Micro Dry Grinding Mills and a variety of POLYMIX® and MICROTRON® Overhead Stirrers and Mixers.

Whatever your application, we are confident that our team of specialists, with over 60 years of experience, will provide the best solution for you.

YOUR SATISFACTION IS OUR GOAL!



KINEMATICA
DISPERSING AND MIXING TECHNOLOGY



Headquarters
KINEMATICA AG
Dispensing and Mixing Technology

Luzernerstrasse 147a
6014 Luzern
Switzerland

Tel. +41 41 259 65 65
Fax +41 41 259 65 75
E-Mail info@kinematica.ch

Subsidiaries
KINEMATICA, INC.
Dispensing and Mixing Technology

155 Keyland Court
Bohemia, NY 11716
USA

Tel. +1 631 750 66 53
Fax +1 631 750 66 57
E-Mail info@kinematica-inc.com

KINEMATICA AG
Dispensing and Mixing Technology

Office Eastern Europe
Prosp. Akad. Palladina 44
UA – Kyiv 03680

Tel./ Fax +38 044 422 61 27
E-Mail info@kinematica.com.ua
web www.kinematica.com.ua

KINEMATICA GMBH
Dispensing and Mixing Technology

Münstertäler Str. 12
79427 Eschbach
Germany

Tel. +49 7634 504 800 0
Fax +49 7634 504 800 22
E-Mail info@kinematica.de

BRAND NAMES WITH HISTORY



Batch dispersing/homogenizing units



High turbulent mixing



Inline dispersing/homogenizing units



Dispersing/homogenizing Reactors



Stirrers and dry Mills



Mixer/Blender



Viscometers