



MDF-DU900V

## -86°C Ultra-low Temperature Freezer



845 L

PHCbi's MDF-DU900V -86°C Upright Freezer provides maximum sample storage capacity within an optimum footprint combined with industry leading cooling performance and reliability for an ideal long-term preservation solution.

### Maximum Sample Storage

The use of space saving VIP PLUS panels within the freezer cabinet allows a capacity of up to 616 2" boxes inside a footprint of just 1m<sup>2</sup> for maximum storage. The freezer's conventional depth allows for easy installation.

### Reliable PHCbi Technologies

The compressors that are specifically designed for ultra-low temperature applications are employed in the proven PHCbi cascade refrigeration system ensuring high levels of performance and reliability.

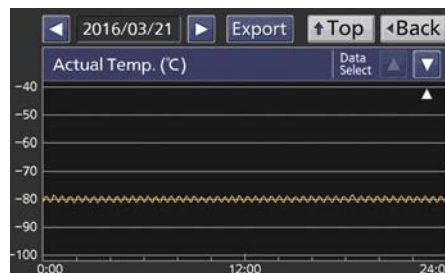
### Enhanced Use & Intelligent Security

The new EZlatch makes access to stored samples even easier. A colour LCD touch panel allows full user control, even with gloved hands, while the USB port makes transferring logged data to a PC simple and convenient.



### High Capacity Sample Storage

Ideal for high volume and long term sample storage in biobanks and biorepositories.



### Dependable Preservation

Quality of design and manufacture ensures trusted and reliable storage that maintains the integrity of precious samples.



### Easy Data Monitoring

Important information such as freezer temperature, door opening times and alarm history is logged for monitoring in GLP applications.

## -86 °C Ultra-Low Temperature Freezer



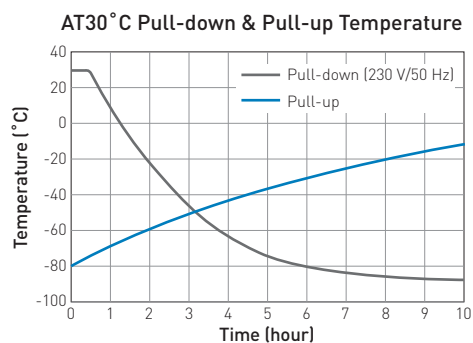
### Application Specific Design

Refrigeration components are carefully selected and matched for optimum and efficient operation under demanding laboratory environments. This improves temperature recovery after door openings and sample placement, while ensuring lower internal temperatures for increased durability.

### Microprocessor Control with Touch Screen Display

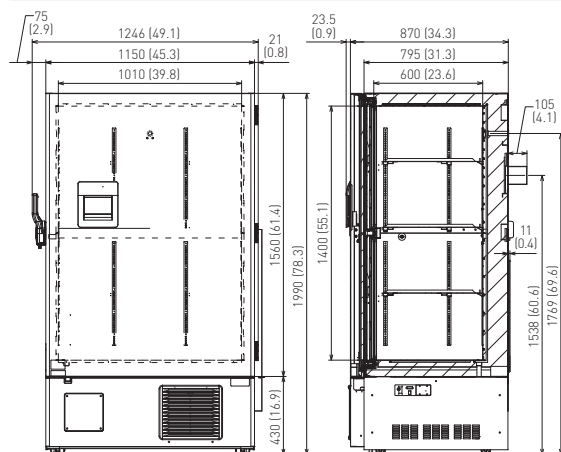
Managed and monitored by an integrated microprocessor controller with a comprehensive alarm system and self-diagnostic functions. Freezer temperature and important status information are clearly displayed and logged, with the possibility to export the data to USB.

### Performance Data



### Dimensions

Unit : mm (inch)



Model Number	MDF-DU900V-PB	MDF-DU900V-PE	MDF-DU900VC-PA	MDF-DU900V-PK	
External dimensions (W x D x H) <sup>1)</sup>	mm 1150 x 870 x 1990				
Internal dimensions (W x D x H)	mm 1010 x 600 x 1400				
Volume	litres 845				
Net weight	kg 376	kg 382			
Capacity	2" boxes 616				
<b>Performance</b>					
Cooling performance <sup>2)</sup>	°C -86				
Temperature setting range	°C -50 to -90				
Temperature control range <sup>2)</sup>	°C -50 to -86				
<b>Control</b>					
Controller	Microprocessor, non-volatile memory				
Display	LCD Touch Screen				
Temperature sensor	Pt-1000				
<b>Refrigeration</b>					
Refrigeration system	Cascade				
Compressors	W	2 x 1100			
Refrigerant	HFC				
Insulation material	PUF / VIP PLUS				
Insulation thickness	mm	70			
<b>Construction</b>					
Exterior material	Painted Steel				
Interior material	Painted Steel				
Outer door	qty	1			
Outer door lock	Y				
Inner doors	qty	2 pieces (insulated)			
Shelves	qty	3 (stainless steel)			
Max. load - per shelf	kg	50			
Max. load - total	kg	574.2			
Vacuum release port	Y				
Access port	qty	2			
Access port position	Back, Bottom				
Access port diameter	∅ mm	17			
Casters	qty	4 (2 leveling feet)			
<b>Alarms</b> (V = Visual Alarm, B = Buzzer Alarm, R = Remote Alarm)					
Power failure	V-B-R				
High temperature	V-B-R				
Low temperature	V-B-R				
Filter	V-B				
Door open	V-B				
<b>Electrical and Noise Level</b>					
Power supply	V	220	230 / 240	220	220
Frequency	Hz	50	50	60	60
Noise level <sup>3)</sup>	dB (A)	52			
<b>Options</b>					
Small inner door kit	set of 2	MDF-91D-PW (max 2) <sup>4)</sup>			
Liquid CO <sub>2</sub> back-up	MDF-UB6B-PW				
Inventory rack	IR-224U-PW, IR-220U-PW				
Temperature recorders	- Circular type	MTR-G85C-PE <sup>5)</sup> - Chart paper: RP-G85-PW			
	- Ink pen: PG-R-PW				
	- Continuous strip type	MTR-85H-PW <sup>5)</sup> - Chart paper: RP-85-PW			
	- Ink pen: DF-38FP-PW				
- Recorder housing: MDF-S3085-PW					
<b>Optional Communication Systems</b>					
Digital interface (RS232C/RS485) <sup>6)</sup>	MTR-480-PW				
Ethernet interface (LAN) <sup>6)</sup>	MTR-L03-PW				

<sup>1)</sup> Exterior dimensions of main cabinet only, excluding handle and other external projections.

<sup>2)</sup> Air temperature measured at freezer centre, ambient temperature 30 °C, no load.

<sup>3)</sup> Nominal value - Background noise 20 dB(A).

<sup>4)</sup> Installation of small inner door kit may effect usable storage capacity.

<sup>5)</sup> Requires sensor cover MTR-DU700SF-PW.

<sup>6)</sup> Only for MTR-5000 (data acquisition system) users.

**Caution:** PHC Corporation guarantees this product under certain warranty conditions. However, please note that PHC Corporation shall not be responsible for any loss or damage to the contents of the product.



### Preservation (freezers, refrigerators) and Culturing (incubators) Equipment

The management of the design, development, production, sales support, and servicing of the above.

PHC Corporation, Biomedical Division

1-1-1 Sakada, Oizumi-machi, Ora-gun, Gunma 370-0596, Japan



PHC Corporation, Biomedical Division is certified for:  
**Environmental management system: ISO14001**

DISTRIBUTED BY:

**phcbi**  
PHC Corporation

<http://www.phcd.com/global/biomedical>

Printed in Japan 1111-2018-04-AA