

# Most confident in my pouch medication dispensing



**IRIS** Automated medication  
pouch checking



**ZIUS.**  
medical



Quality to rely on

# The ZiuZ IRIS secures your dispensing process of pouch medication



## Accurate error finding

The ZiuZ IRIS uses advanced visual intelligence technology. Using various parameters, the ZiuZ IRIS meticulously analyses the contents of each medication pouch. Any errors are quickly identified on screen through color coding.



## Detailed evidence of packaging

The ZiuZ IRIS takes a photo of the front and back of each dosage bag. These photos are saved in a central storage, so that they can be easily retrieved if necessary.



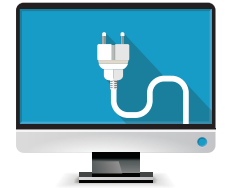
## Quality

The ZiuZ IRIS has the lowest reported error rate. A risk of 1.33 pouches per million. Scientifically proven.



## Plug and Play

The ZiuZ IRIS is easily installed, implemented and taken into production. The reference image database is easily built straight from the beginning, straight from production pouches.



## Effective and Efficient

The ZiuZ IRIS approves up to 98% of the pouches automatically leaving very few pouches to be checked on screen.



## Multiple interfaces

The ZIUZ IRIS interfaces to most popular brands of pouch packaging machines.

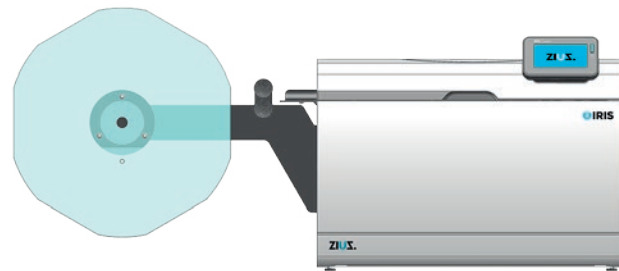


# ZiuZ IRIS technical specifications

- Full color analyses
- Quality log
- Covers production of at least one dispensing machine (2,000 pouches per hour)
- Interfaces to JVM, Panasonic ATP and Yuyama
- Easy retrieval of production pics
- Intuitive interface
- Error pinpointing through color coding
- Automatic approval rate up to 98%

## Dimensions

|         |       |
|---------|-------|
| Height: | 43 cm |
| Width:  | 65 cm |
| Depth:  | 38 cm |



# ZiuZ Medical

ZiuZ has built a long and successful experience with the Inspector and Photon high volume pouch checking devices. ZiuZ Medical operates independently of drug dispenser machine manufacturers and can interface with all main dispenser machine brands. The production of millions of medication pouches are checked by ZiuZ Medical inspection devices on a daily basis.

ZiuZ Medical is a knowledge-intensive company specialised in developing and applying cutting-edge visual intelligence technology for pharmaceutical and medical purposes. It is driven by a determination to make a difference in medical challenges. The Company has a pragmatic and no-nonsense approach; an approach that encourages successful collaboration with partners and customers.

ZiuZ is based in Gorredijk, Friesland, in the north of the Netherlands.

## More information

Find out more by contacting ZiuZ Medical at:

PO Box 114  
8400 AC Gorredijk  
The Netherlands

Tel: +31 513 460 080

Or visit

[www.ziuz.com](http://www.ziuz.com)

